

Measuring a U-bolt

ORDERING INFORMATION

The following information is required for us to produce a u-bolt.

A - Inside length of leg _____ m.m.

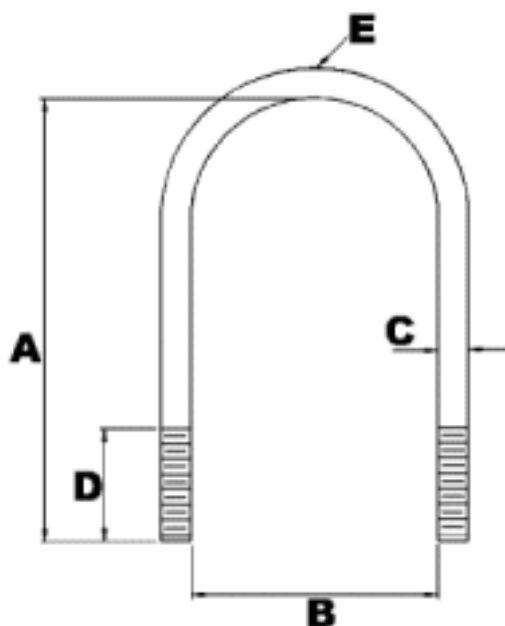
B - Inside width between legs _____ m.m.

C - Material diameter _____ m.m.

D - Length of thread & type _____ m.m.
ie. UNF, BSW, ISO, or UNC

E - Shape (see below) _____

* Grade, if important



U-Bolt Shapes



Round Corner



Square



Round



Semi-Round

Industrial Engineers & Spring Makers
341 - 359 Port Road, HINDMARSH SA 5007
Ph: (08) 8346 2276 Fax: (08) 8340 1721
sales@industrialsprings.com.au
www.industrialsprings.com.au

